

ESSENTIAL INFORMATION FOR PET OWNERS



This guide outlines critical information to help you support your dog through their STELFONTA® treatment.

There are four stages of STELFONTA treatment:

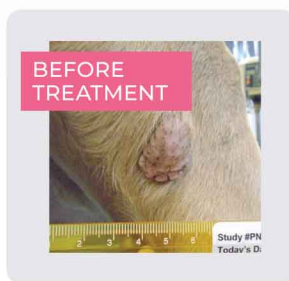


STAGE 1: ESSENTIAL MEDICATIONS

- Essential medications (corticosteroids and antihistamines) will prepare your dog's body to fight the tumour and reduce risks associated with inflammatory substances that can be released from the tumour as the mast cells are destroyed.
- Medications start two (2) days before STELFONTA injection and continue for eight (8) days post treatment.



TIP: Tell your veterinarian about any other medication your dog is taking, previous or current medical conditions, whether your dog is pregnant or nursing or you intend to breed your dog. **Give ALL medications as prescribed by your veterinarian.**

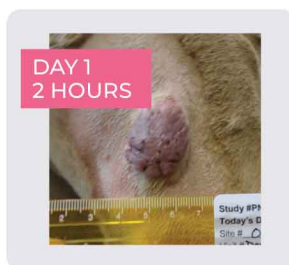


STAGE 2: STELFONTA INJECTION

- Your veterinarian will inject STELFONTA directly into your dog's tumour.
- Most dogs do not need sedation or anaesthesia during the procedure, although occasionally dogs may be sedated.
- Adverse events reported in dogs treated with STELFONTA were generally mild and short lasting. The most common side effects are at the treatment site (mild-to-moderate pain and wound formation), lameness, vomiting and increased heart rate.



NOTE: Tumours can change in colour and swell after treatment – typically within 4 hours and is usually a sign STELFONTA is working.

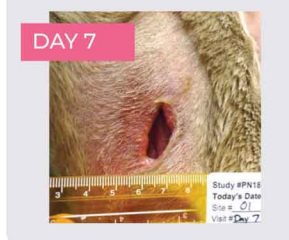
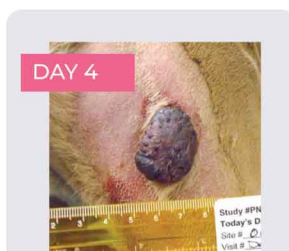


STAGE 3: TUMOUR DESTRUCTION

- Between days 1-7 after Stelfonta administration, bruising or swelling may appear at the treated tumour site; this can last for several days and cause your dog some discomfort. Pain medication may be prescribed by your treating veterinarian to relieve discomfort.
- The treated tumour site will often blacken and leak some fluid which may have an odour – do not be concerned, this is part of the process.
- A reddish "pocket" or wound will form, which allows healthy new skin to grow.



TIPS: Keep the wound uncovered. To clean the site, use warm water and wear disposable gloves. Fluid leaking from the treatment site within the first 24 hours may contain residual medicine – thoroughly wash any skin that comes into contact with wound fluid. Maintain hydration by providing access to drinking water at all times.



ESSENTIAL INFORMATION FOR PET OWNERS (CONTINUED)

STAGE 4: WOUND HEALING

- Wounds start to heal from day 7, and by day 14 healthy new skin is usually evident, with wounds completely healed by day 28-84.
- Your veterinarian will schedule regular follow-up visits. In some cases, a second STELFONTA treatment may be needed if your dog's tumour has not been completely removed.

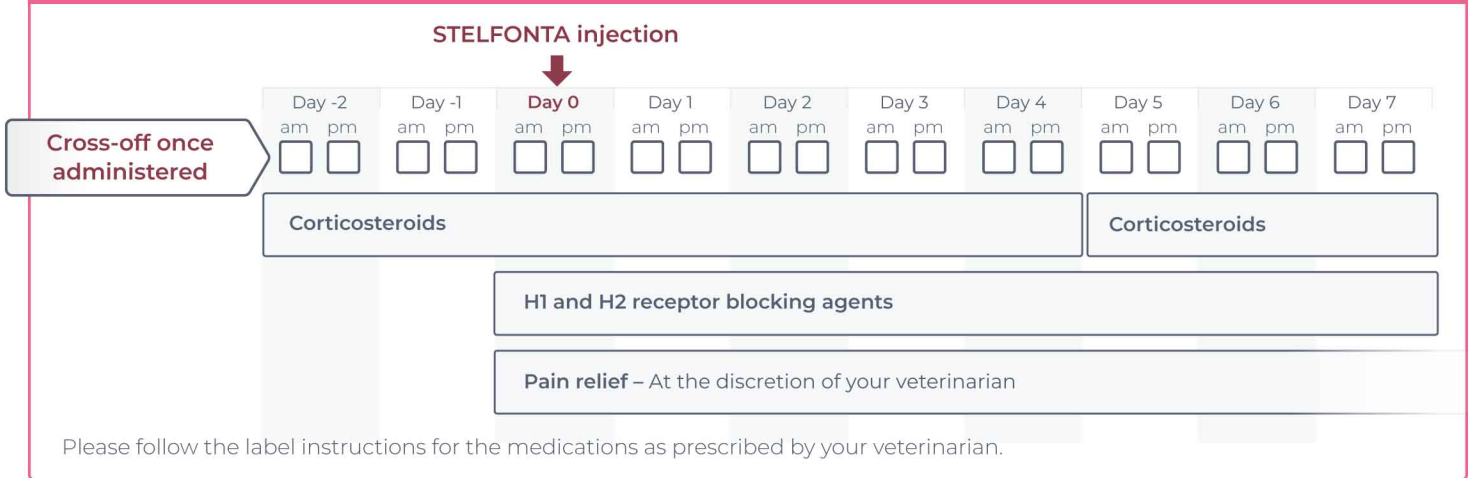


*Images shown are from an 8 year old, male cross breed dog. Individual reactions vary. See other cases at au.virbac.com/stelfonta-pet-owner

CONTACT YOUR VETERINARIAN RIGHT AWAY IF:

- !** Your dog is experiencing vomiting, ongoing loss of appetite, severe pain, lethargy or extensive swelling.
- !** Your dog is excessively licking or rubbing the treatment site; they may need an Elizabethan collar (or e-collar) or a dry gauze bandage to cover the wound.
- !** You have any questions about your dog's treatment or recovery.

Essential medications to accompany STELFONTA



Wendy and Barney

Barney's tumour was on his bottom – a tricky place to treat surgically, especially since his tumour was so close to the bowel. And because there's always risks with anaesthesia in older dogs, STELFONTA was an easy choice for us to make.



Charlie and Buddy

He responded [to STELFONTA] very well and extremely quickly. He is now happy and cancer free.



To learn more about how you can support your dog through STELFONTA treatment and to see more images and stories of dogs treated with STELFONTA, go to au.virbac.com/stelfonta-pet-owner or use the camera on your smartphone to capture this QR code.